



# OPEN SPACE AND RECREATION WORKING GROUP 2023 PROGRESS REPORT

March 6, 2024

# GOALS

- **Increase public awareness** of natural resources and conservation areas through education, site tours, posting on the Town's website, and through social media.
- Provide a range of **recreational opportunities** for all residents.
- **Manage, maintain, and improve existing open space.** Promote this space and make it accessible to the public for appropriate use.
- **Acquire new open space** to preserve Lynnfield's semi-rural character, protect drinking water supplies, and meet passive and active recreation needs.
- Ensure the **protection of important wildlife habitats**, surface waters, wetlands, and other critical natural resources and scenic landscapes.



# MAJOR ACCOMPLISHMENTS

## A. PUBLIC AWARENESS

- Brochures & Trail Maps  
*(links on town website)*
  - ✓ Pine Hill
  - ✓ Partridge Island
  - ✓ Bow Ridge/Kallenberg Quarry
  - ✓ Lynnfield Woodlot
- Blog posts, Press releases, Articles & Social Media
  - ✓ Bow Ridge
  - ✓ Partridge Island
  - ✓ Lynnfield Woodlot



## B. RECREATION AREAS

- Trail walks:
  - ✓ Partridge Island: 7/15/23
  - ✓ Beaver Dam Brook Reservation: 8/23/23
  - ✓ Lynnfield Woodlot: 1/6/24

*Future brochures, trail maps to be published when trails accessible to public:*

- *Lynnfield Rail Trail including Broad Meadows and Reedy Meadow*
- *Willis Woods including Bennett Keenan Conservation Area/Ipswich River*



# MAJOR ACCOMPLISHMENTS CON'T

## C. MANAGE OPEN SPACE

- Eagle Scout project at BDBR
- Identify student projects to enhance trailheads, boardwalks, and public access
- Coordination with DPW & LCWD

## D. LAND ACQUISITION &

## E. NATURAL RESOURCES

- Reviewed priority list of potential properties for protection
- Discussions related to protecting wildlife habitats, surface waters, wetlands & other

# 2024 ACTION PLAN

- **Complete brochures & trail maps**
- **Prepare a town-wide map of open spaces & recreation areas**
- **Continued education, communication, and promotion of open spaces**
- **Seek funding for maintenance and enhancement of open spaces**
- **Identify** with planning & conservation staff and in-house GIS staff **priority lands of interest for protection**
- **Seek to protect & acquire lands** with the assistance of town officials and regional and state agencies
- **Identify opportunities to expand recreational access to Pillings Pond for all Lynnfield residents**
- **Promote and educate sound environmental practices & coordinate with other agencies**



# MEMBERS

Steve Fantone

Don Gentile, Chair, Conservation Commission

Rich Kosian

Mary Lohan

Amy MacNulty, Planning Board

Gerard Noumi, Recreation Commission

Jennifer Welter, Planning Department staff



Walk led by Steve Fantone  
January 6, 2024  
Lynnfield Woodlot, Greenbelt

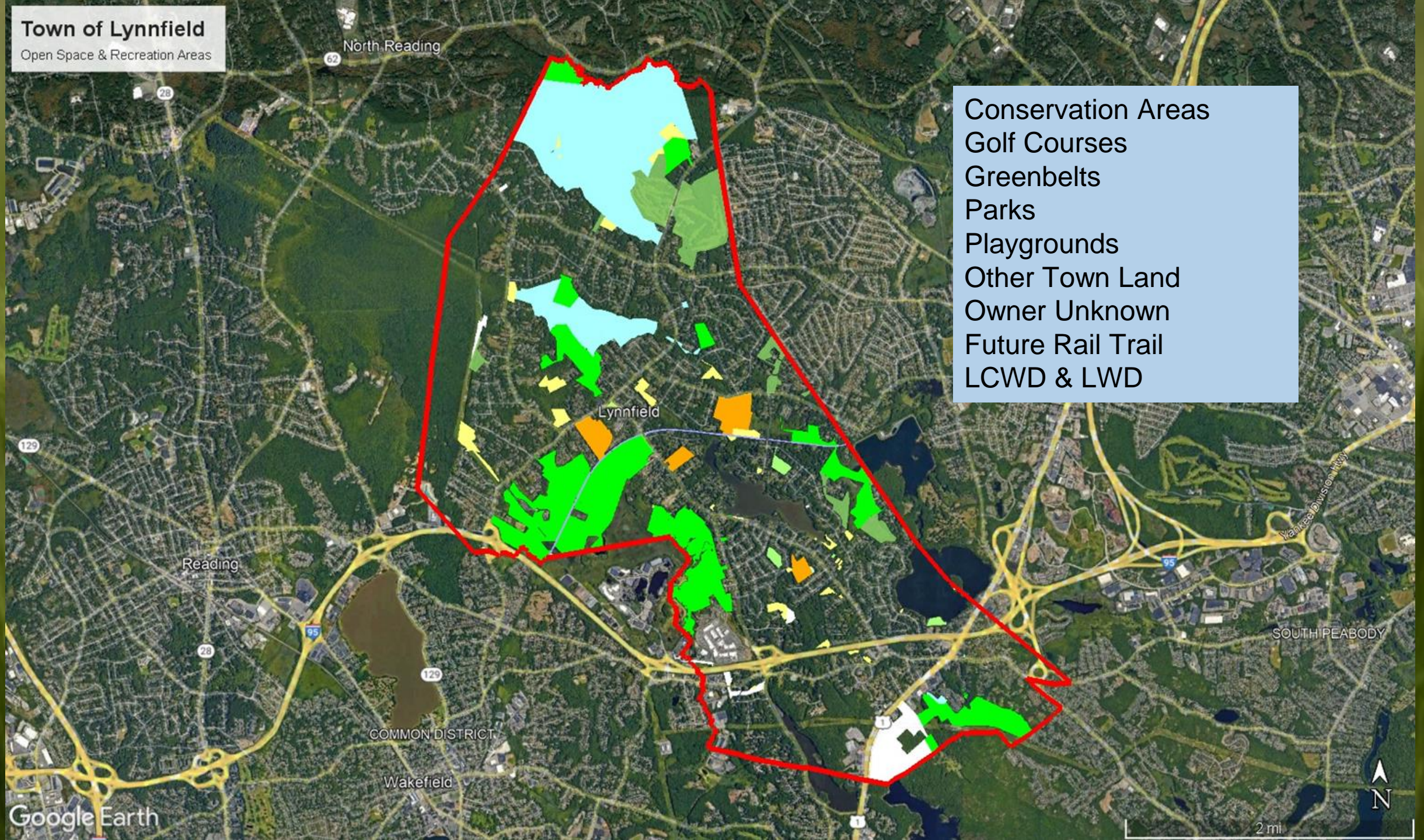


QUESTIONS

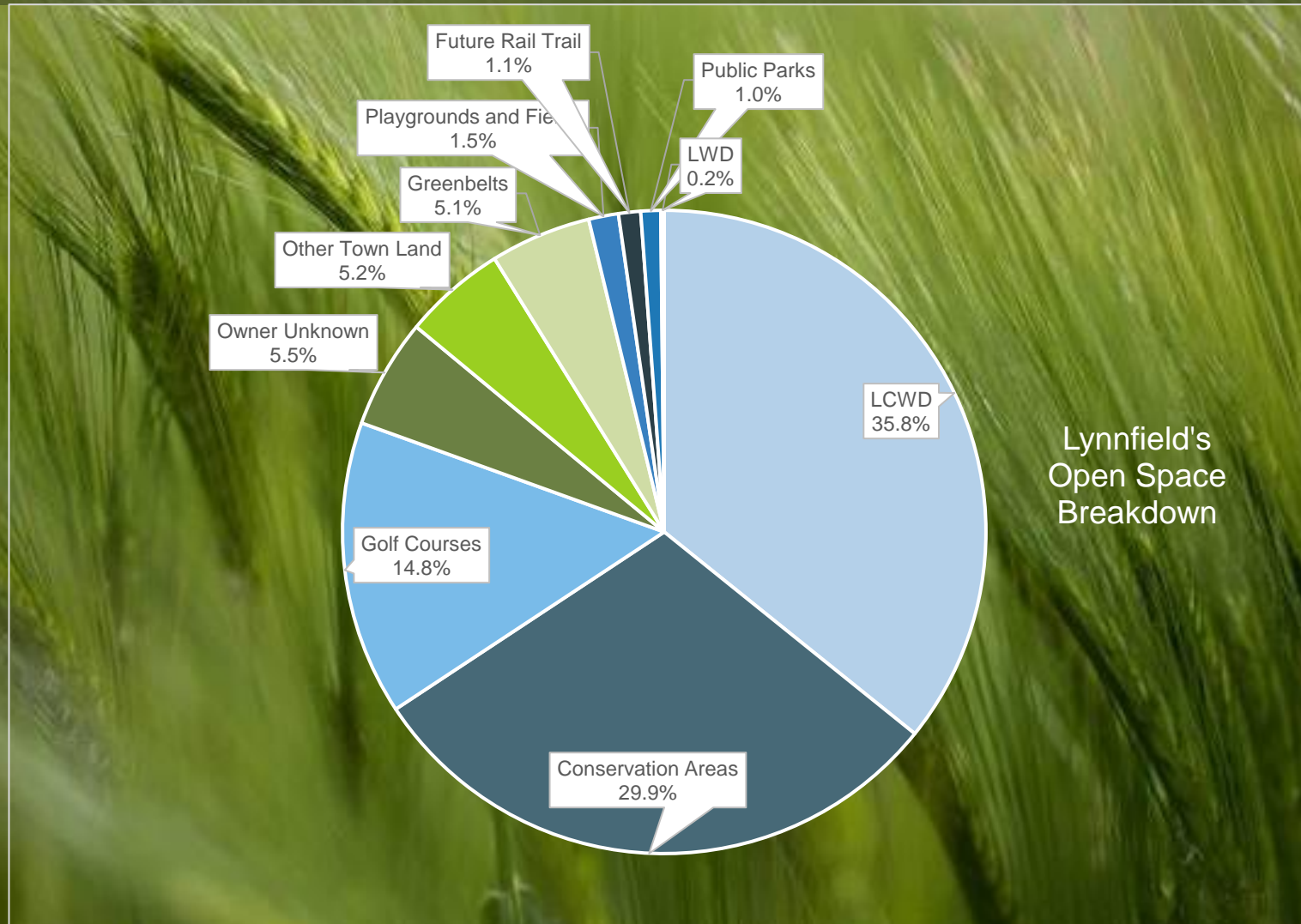
# Town of Lynnfield

Open Space & Recreation Areas

Conservation Areas  
Golf Courses  
Greenbelts  
Parks  
Playgrounds  
Other Town Land  
Owner Unknown  
Future Rail Trail  
LCWD & LWD



# LYNNFIELD'S OPEN SPACE BREAKDOWN





Bennett Keenan  
Conservation  
Area

LCWD  
(Willis  
Woods)

Lynnfield  
Wood  
Lot

Beaver Dam  
Brook  
Reservation

LCWD  
(Phillips  
Rd)