



**Lynnfield**  
MASSACHUSETTS

# **Lynnfield War Memorial Update**

**June 22<sup>nd</sup> 2022**  
**Granit Plate Design**  
**(Names of Veterans)**  
**(War Narrative and Maps)**  
**Design**  
**Pavers for Purchase**  
**Site Preparation Completed**

# War Memorial Plates Designs

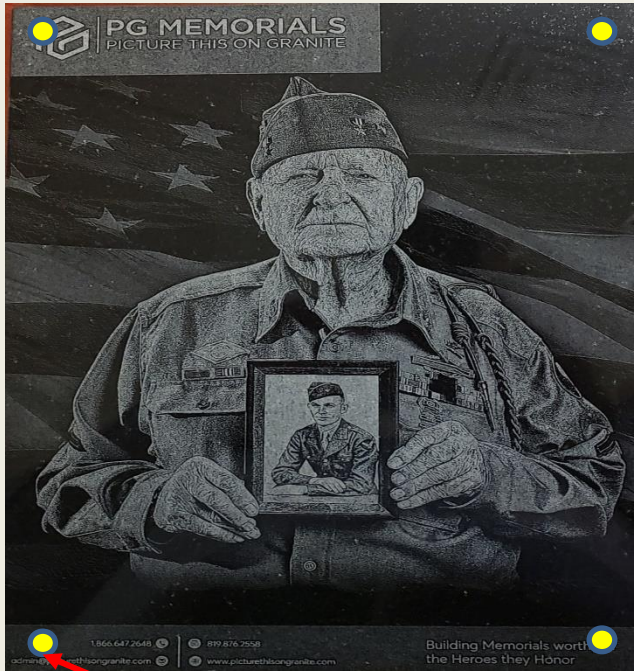
Plates are 20 inches Height  
20 inches Width

Plaques: A series of three educational  
plaques for each conflict for the people of  
Lynnfield  
On the Plaques : Brief History, Map of  
Conflict, Names of Lynnfield Veterans

## Wall Plate Design

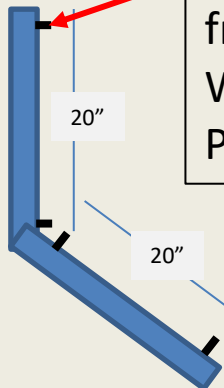


Plaques: There will  
be a set of Plaques  
for every War that  
someone from  
Lynnfield served in.  
Revolutionary War  
to present (and will  
be able to capture  
future wars.



<p>The Revolutionary War Began on April 19<sup>th</sup> 1775 at what is know as the North Bridge, Located 14 miles from here, in the Town of Concord.</p> <p>.....</p> <p>.....</p> <p>.....</p> <p>The War ended on (date), with the following casualties for the war Wounded in Action Killed in Action Missing in Action</p>	<p>Map of where the Revolutionary War took place</p>
<p>Here are the names of those from Lynnfield who severed and fought during Revolutionary War</p> <p>Name, US Army Name, Navy Name, Air Force Name, Marines</p>	<p>Here are the names of those from Lynnfield who severed and fought during Revolutionary War</p> <p>Name, US Army Name, Navy Name, Air Force Name, Marines</p>

Anchor Bolts  
from Concrete  
Wall through  
Plates





# Approved Design, Rough Sketch, as it sits on Engineered Survey Design

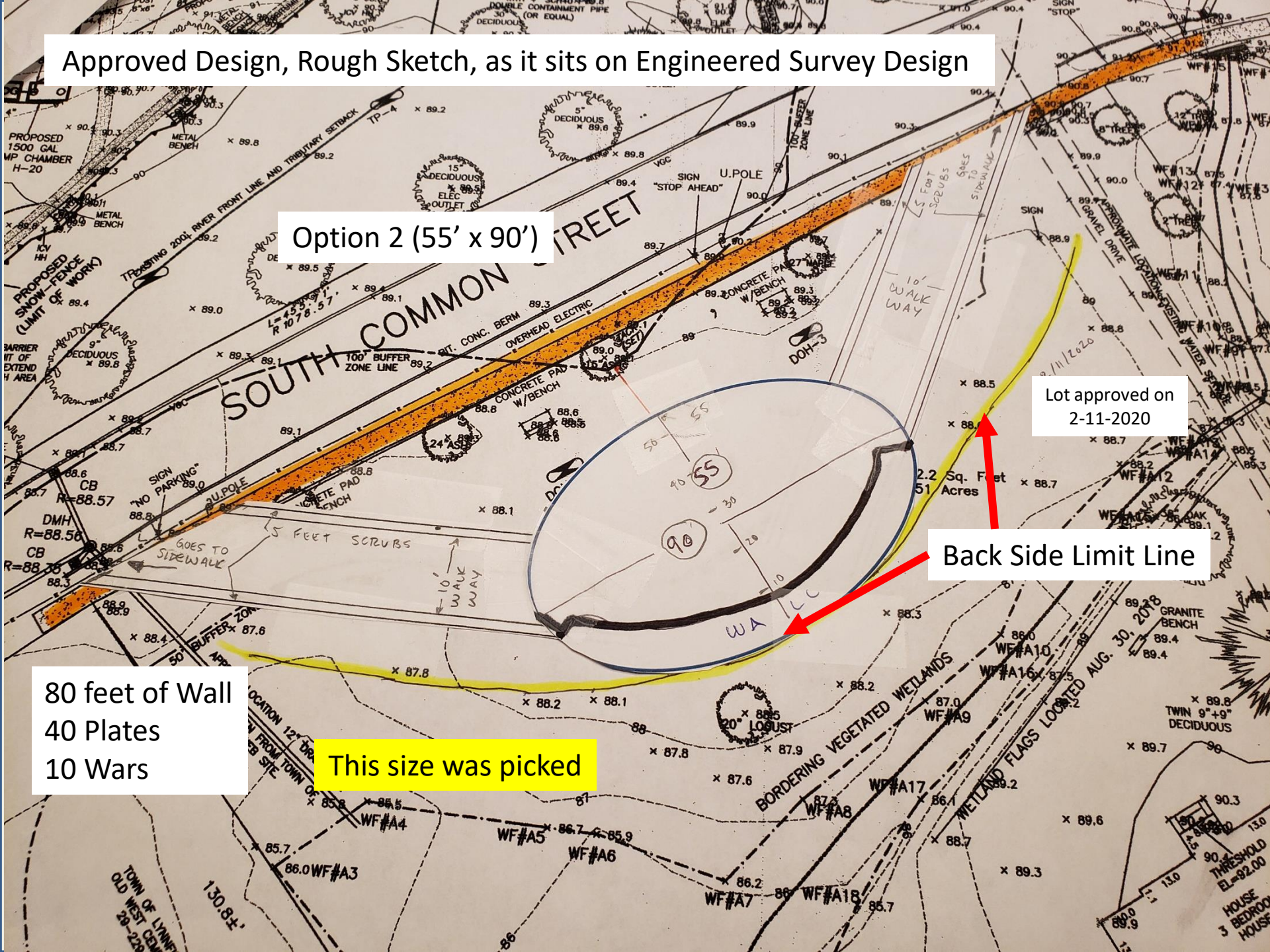
Option 2 (55' x 90')

Lot approved on  
2-11-2020

Back Side Limit Line

80 feet of Wall  
40 Plates  
10 Wars

This size was picked



# War Memorial Plates Designs

Plates are 20 inches Height  
20 inches Width

Plaques: A series of three educational  
plaques for each conflict for the people of  
Lynnfield  
On the Plaques : Brief History, Map of  
Conflict, Names of Lynnfield Veterans

## Wall Plate Design

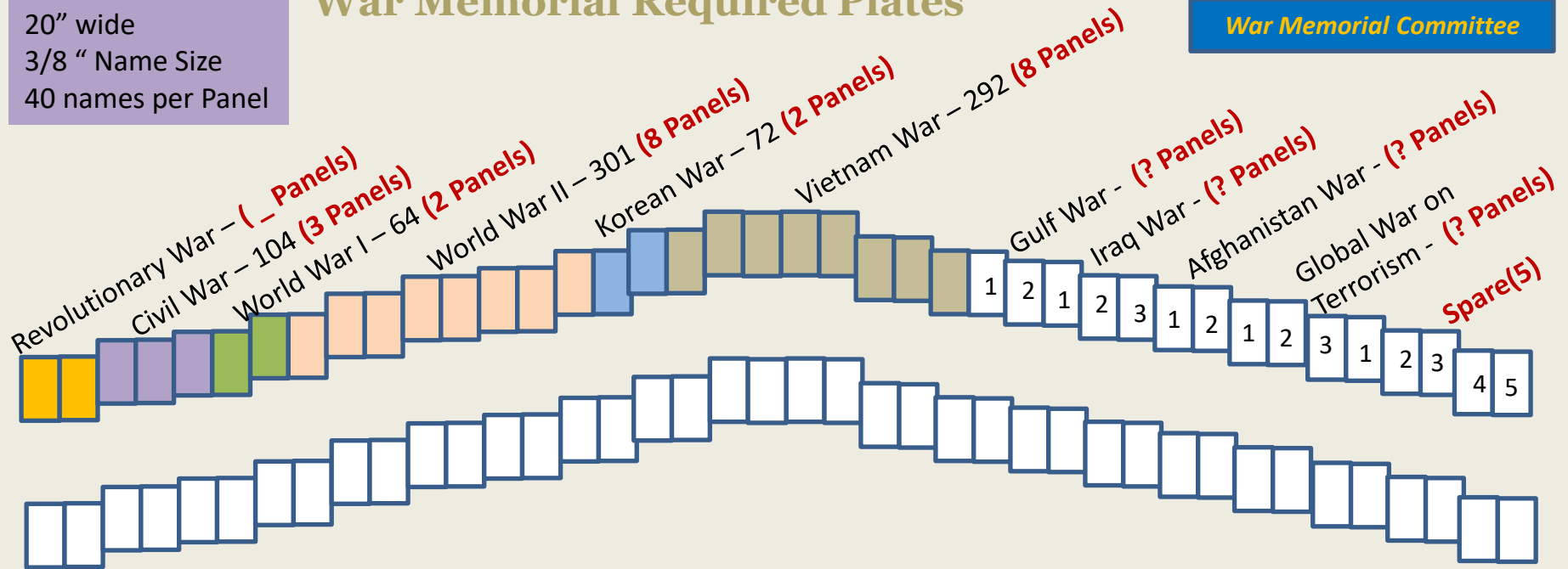


Plaques: There will  
be a set of Plaques  
for every War that  
someone from  
Lynnfield served in.  
Revolutionary War  
to present (and will  
be able to capture  
future wars.

20" wide  
3/8 " Name Size  
40 names per Panel

# War Memorial Required Plates

War Memorial Committee



Here's a count on the names that I have so far

Revolutionary War – (1 Panels)

Civil War – 104 (3 Panels)

World War I – 64 (2 Panels)

World War II – 301 (8 Panels)

Korean War – 72 (2 Panels)

Vietnam War – 292 (8 Panels)

Gulf War - Unknown at this time (1 Panels)

Iraq War - Unknown at this time (1 Panels)

Afghanistan War - Unknown at this time (1 Panels)

Global War on Terrorism - Unknown at this time (1 Panels)

Total (So Far) = 23

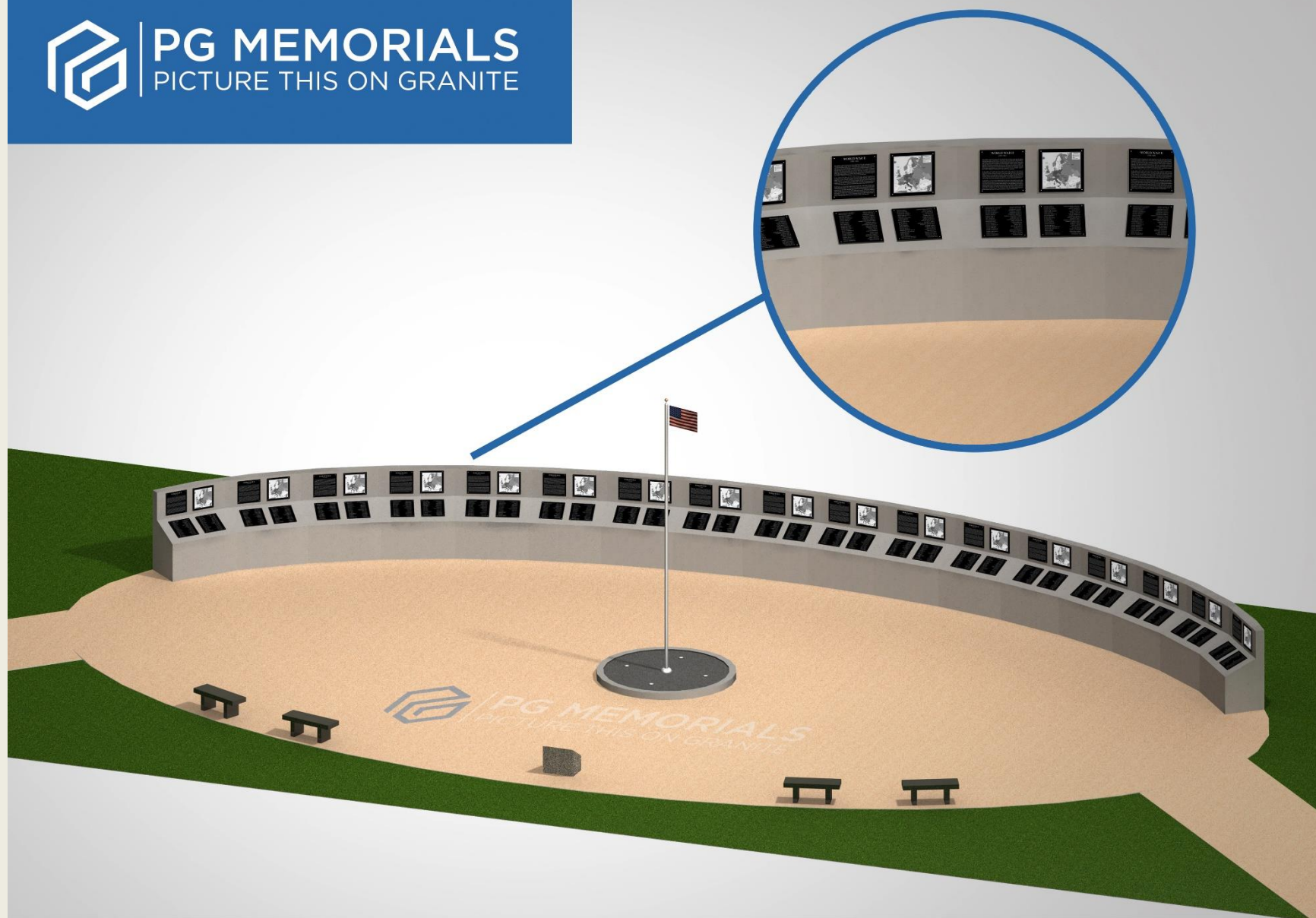
## Major American Wars

- The Revolutionary War (1775-1783)
- American Civil War (1861–1865)
- World War I (1914-1918)
- World War II (1939-1945)
- Korean War (1950-1953)
- Vietnam War (1960-1975)
- Desert Shield Desert Storm War (1990-1991)
- Afghanistan War (2001 – Present)
- Iraq War (2003-2011)
- Global War on Terrorism (2001 - )





**PG MEMORIALS**  
PICTURE THIS ON GRANITE



1.866.647.2648



info@picturethisongranite.com



819.876.2558



www.picturethisongranite.com



Building Memorials worthy of  
the Heroes they Honor

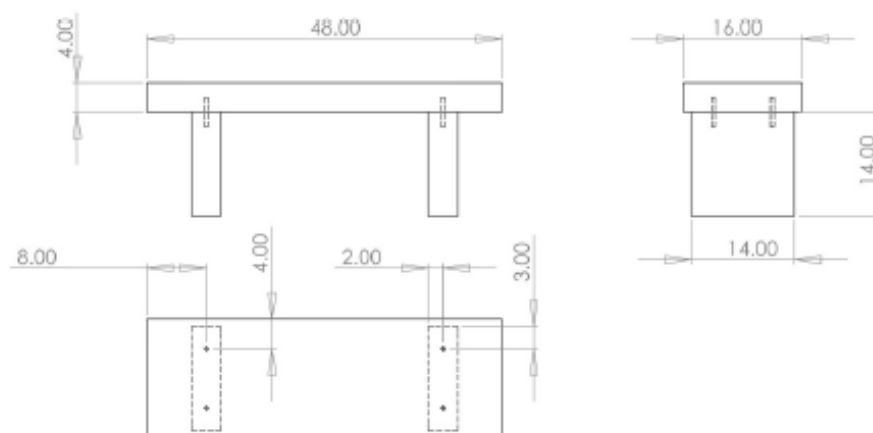


**Standard Bench**

Black granite

Polished finish

Approx 540lbs



**Lynnfield War Memorial, MA**

Guarantee

P.G. Order Terms And Conditions



## War Memorial Plates Designs

Working Numbers for required Panels

Required Panels for the War Memorial, Estimated Count

8 inch names

3/4" Blocks

Here's a count on the names that I have so far

Revolutionary War – Unknown at this time

Civil War - 104

World War I - 64

World War II - 301

Korean War - 72

Vietnam War – 292

Gulf War - Unknown at this time

Iraq War - Unknown at this time

Afghanistan War - Unknown at this time

Global War on Terrorism - Unknown at this time

Example of Lettering and spacing

3/4"

### Major American Wars

- The Revolutionary War (1775-1783)
- American Civil War (1861–1865)
- World War I (1914-1918)
- World War II (1939-1945)
- Korean War (1950-1953)
- Vietnam War (1960-1975)
- Desert Shield Desert Storm War (1990-1991)
- Afghanistan War (2001 – Present)
- Iraq War (2003-2011)
- Global War on Terrorism (2001 - )

## War Memorial Plates Designs

### **Option Picked – 3/8" Names**

29 Panels

Each Panel, **20"** wide

10 identified wars

A Panel between each War, and at each end = 11

29 panels, with (at each end and spacers between wars) 11 Blank Panels = 39

**39 panels at 20" wide = 65 Feet**

## Lynnfield War Memorial

S. Common St  
Lynnfield MA

8.3.21

Construction Drawings

 Ranere Associates Inc.  
Architecture & Interiors  
74 Edgemont Ave Reading MA 01867  
T: 617.818.4586  
www.rai-architects.com



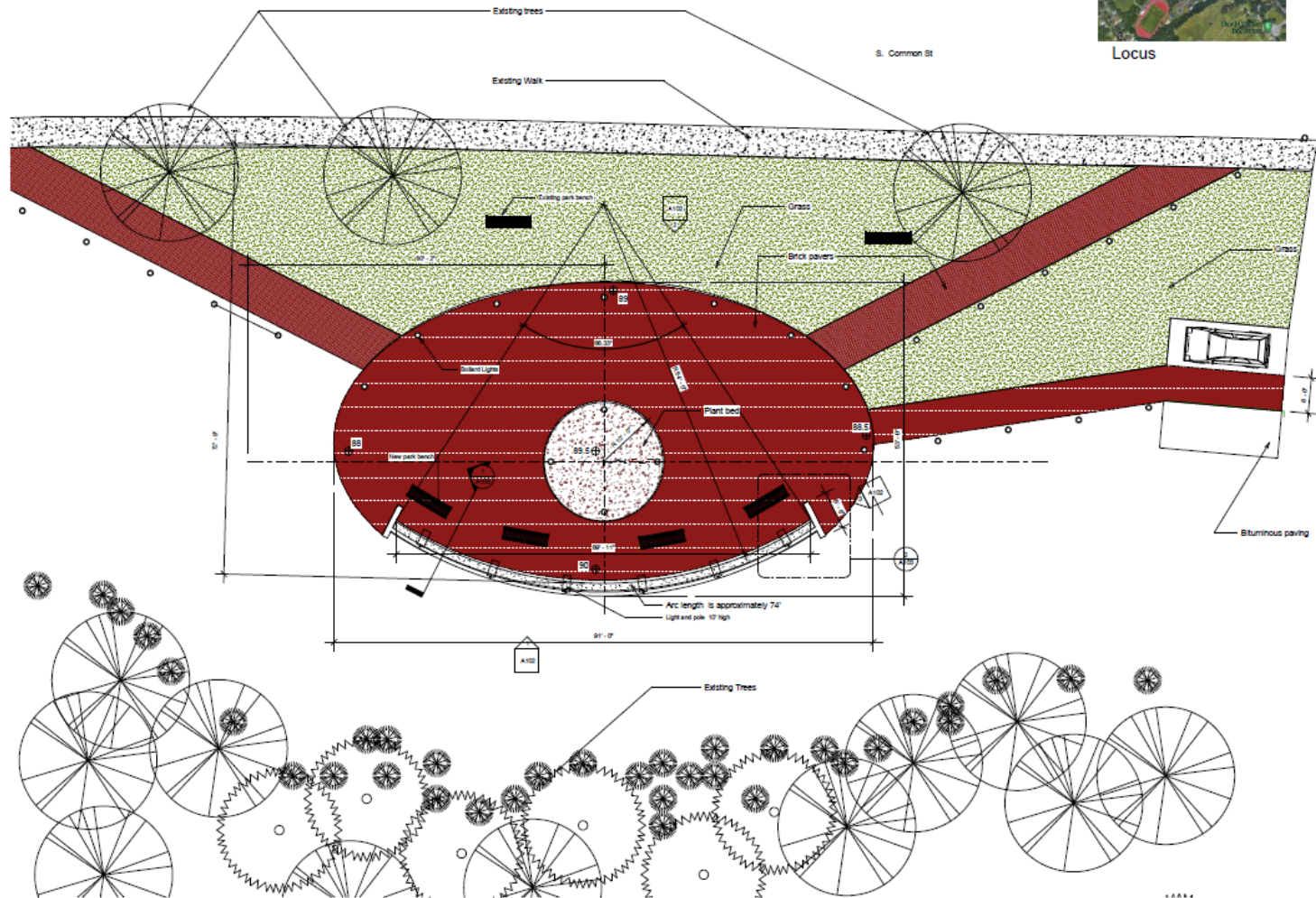
### General Notes

1. All grading and civil details to be done by Civil Engineer
2. All electrical shall be done by an electrical engineer
3. Precast panels shall be structurally designed and built by SPCL, precursors of PSC Precast Specialties Corp., 996 Adams Street, P.O. Box 96, Abington MA 02551



Sheet List	
Sheet Number	Sheet Name
A101	Title Sheet
A102	Site Plan
A103	Elevations
A104	Sections and Details

# Finished Architectural Design

War Memorial Committee



Locus

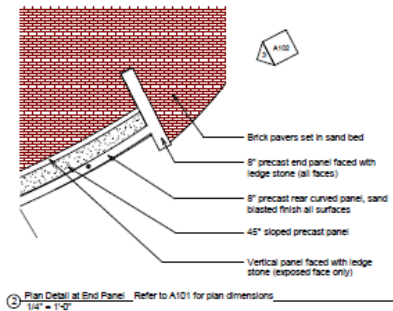
 <p>Ranere Associates Inc. Architecture &amp; Interiors 74 Edgewater Ave. Reading MA 01867 T: 617-542-2111 www.ranereassociates.com</p>	
CONSULTANTS	
Consultants	
DRAWN BY	
Author	
DATE	
8.3.21	
NO.	REVISION DATE BY
PROJECT	
Lynnfield War Memorial	
S. Common St Lynnfield MA	
	
DRAWING	
Site Plan	
SCALE	
1/8" = 1'-0"	
A101	
SET	
Construction	
Drawing	



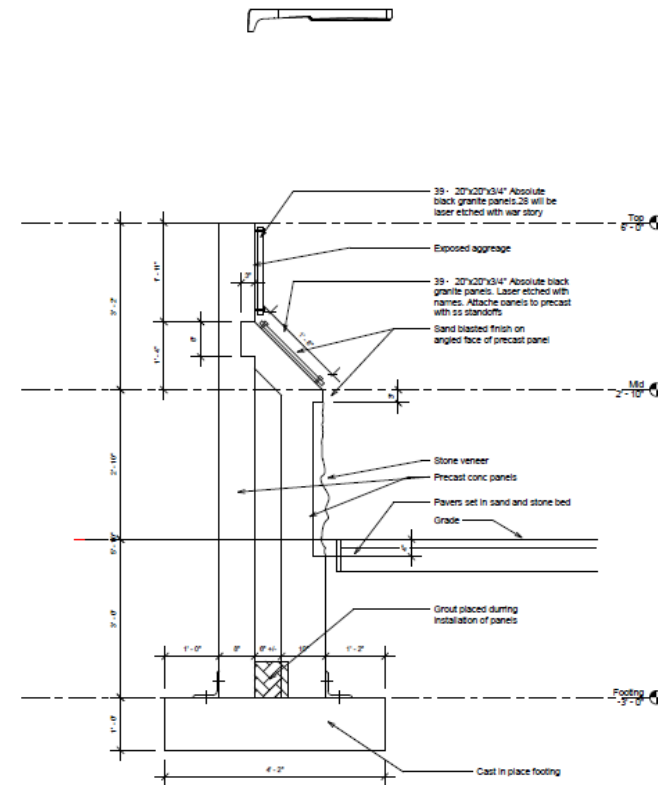


# Finished Architectural Design

War Memorial Committee



② Plan Detail at End Panel Refer to A101 for plan dimensions  
1/4" = 1'-0"



① Section I  
1/2" = 1'-0"



Ranere Associates Inc.  
Architecture & Interiors  
74 Glenmont Ave.  
Reading MA 01867  
T: 617-542-2111  
www.ra-architects.com

CONSULTANTS  
Consultants

DRAWN BY  
Author

DATE  
8.3.21

NO. REVISION DATE BY

PROJECT

Lynnfield  
War  
Memorial

S. Common St  
Lynnfield MA



DRAWING  
Sections and  
Details

SCALE  
As Indicated

A103

SET  
Construction  
Drawings

## Example of Paver Web Site, types and Colors Web Site to View

[https://polarengraving.com/veterans-memorial-bricks/?gclid=Cj0KCQIA3rKQBhCNARIsACUEW\\_Y4fdC2QqtE9tX0mdwSno8t105rsleHI4j-StNo3VqvSNx3GK5GhcaAh3gEALw\\_wcB](https://polarengraving.com/veterans-memorial-bricks/?gclid=Cj0KCQIA3rKQBhCNARIsACUEW_Y4fdC2QqtE9tX0mdwSno8t105rsleHI4j-StNo3VqvSNx3GK5GhcaAh3gEALw_wcB)

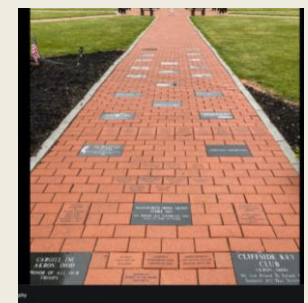
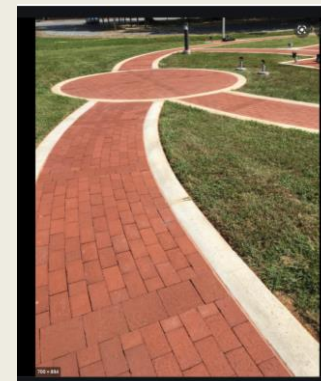
## Examples of Gray with Black Lettering



## Example of different sizes

G	H	I	J	K	L
LARRY CONLEY WWII EUROPE INFANTRY	IN MEMORY OF CHARLES L. CHODINI U.S. NAVY WORLD WAR II	ISS. MCKINNE NAVY DEAN HUSBAND AND FATHER 1929-1987	IN HONOR OF OUR FATHER DON M. GREENE U.S. NAVY WWW-4281A	IN HONOR OF OUR FATHER CARL F. SUTTE 1907 USMC 88-55	HENRY D. SUTTER NAVAL CORPS 1923-1999 IN MEMORY OF JOSEPH PIZZIN NAVY VETERAN
R.D. VIRGIN U.S. NAVY 1952 - 1956	IN MEMORY OF JOHN E. MATTHEWS WORLD WAR II	FLOYD PARNETT WORLD WAR II	IN HONOR OF MILITARY MEDALS CHARLOTTE M. DANIELSON MAGNET RST	DONALD CARLUS U.S. ARMY WORLD WAR II	JOHN HIGGINS PULIT RCAF WWI NAVY HIGGINS WMA BRIDE WWI VIR. EL. 1944
PAUL SHANN U.S. NAVY WORLD WAR II	RONALD B. MCKINER U.S. NAVY WORLD WAR II	JOHN D. MCKINER U.S. NAVY WORLD WAR II	IN HONOR OF MILITARY MEDALS CHARLOTTE M. DANIELSON MAGNET RST	IN HONOR OF MILITARY MEDALS CHARLOTTE M. DANIELSON MAGNET RST	JOHN HIGGINS PULIT RCAF WWI NAVY HIGGINS WMA BRIDE WWI VIR. EL. 1944
WILLIAM J. DAVIS U.S. NAVY 1952 - 1956	LAWRENCE E. DANIELSON U.S. NAVY 1952 - 1956	GERALD LINDEN WORLD WAR II	ROBERT MAGNET U.S. NAVY 1952 - 1956	IN HONOR OF MILITARY MEDALS CHARLOTTE M. DANIELSON MAGNET RST	JOHN HIGGINS PULIT RCAF WWI NAVY HIGGINS WMA BRIDE WWI VIR. EL. 1944
WILLIAM J. DAVIS U.S. NAVY 1952 - 1956	LAWRENCE E. DANIELSON U.S. NAVY 1952 - 1956	GERALD LINDEN WORLD WAR II	ROBERT MAGNET U.S. NAVY 1952 - 1956	IN HONOR OF MILITARY MEDALS CHARLOTTE M. DANIELSON MAGNET RST	JOHN HIGGINS PULIT RCAF WWI NAVY HIGGINS WMA BRIDE WWI VIR. EL. 1944
WILLIAM J. DAVIS U.S. NAVY 1952 - 1956	LAWRENCE E. DANIELSON U.S. NAVY 1952 - 1956	GERALD LINDEN WORLD WAR II	ROBERT MAGNET U.S. NAVY 1952 - 1956	IN HONOR OF MILITARY MEDALS CHARLOTTE M. DANIELSON MAGNET RST	JOHN HIGGINS PULIT RCAF WWI NAVY HIGGINS WMA BRIDE WWI VIR. EL. 1944
WILLIAM J. DAVIS U.S. NAVY 1952 - 1956	LAWRENCE E. DANIELSON U.S. NAVY 1952 - 1956	GERALD LINDEN WORLD WAR II	ROBERT MAGNET U.S. NAVY 1952 - 1956	IN HONOR OF MILITARY MEDALS CHARLOTTE M. DANIELSON MAGNET RST	JOHN HIGGINS PULIT RCAF WWI NAVY HIGGINS WMA BRIDE WWI VIR. EL. 1944
WILLIAM J. DAVIS U.S. NAVY 1952 - 1956	LAWRENCE E. DANIELSON U.S. NAVY 1952 - 1956	GERALD LINDEN WORLD WAR II	ROBERT MAGNET U.S. NAVY 1952 - 1956	IN HONOR OF MILITARY MEDALS CHARLOTTE M. DANIELSON MAGNET RST	JOHN HIGGINS PULIT RCAF WWI NAVY HIGGINS WMA BRIDE WWI VIR. EL. 1944
WILLIAM J. DAVIS U.S. NAVY 1952 - 1956	LAWRENCE E. DANIELSON U.S. NAVY 1952 - 1956	GERALD LINDEN WORLD WAR II	ROBERT MAGNET U.S. NAVY 1952 - 1956	IN HONOR OF MILITARY MEDALS CHARLOTTE M. DANIELSON MAGNET RST	JOHN HIGGINS PULIT RCAF WWI NAVY HIGGINS WMA BRIDE WWI VIR. EL. 1944

## Examples of Maroon/Red brick with Black Lettering



**Required Memorial Site Prep, to be Finished by 1 July 2022  
Due to yearly water pooling issues and concerns**



Web Site: [https://www.Lynnfield.ma.us/sites/g/files/vyhlf3986/f/file/file/wwii\\_paverapplication\\_6x12\\_fillable.pdf](https://www.Lynnfield.ma.us/sites/g/files/vyhlf3986/f/file/file/wwii_paverapplication_6x12_fillable.pdf)

## Veterans Walk of Remembrance Paver Donation



Donors who contribute \$300 (6" x 12") or \$500 (12" x 12") to the Veterans Walk of Remembrance Paver project will have an opportunity to have an engraved granite paver in the name of service men or women placed in the Veterans Walk of Remembrance. These donations are separate from the any contributions made to the Donor Honor Roll.

The paver can be donated in honor of a service member of the armed forces, past or present, without regard to Wakefield residency.

**The placement of the paver(s) will be determined after the committee receives payment in full.** Although donors may be able to select a location according to the enclosed grid, the location will be allocated in the order in which the payment was received; i.e.: first-come, first-served.

### 6" x 12" Paver - \$300

Each 6" x 12" paver can have a maximum of five (5) lines of text;

Examples:

A: One (1) line of 1" text and 4 lines of 3/4" text.

B: Two (2) lines of 1" text, can only accommodate a maximum of 4 lines of text; for example, 2 lines of 1" and 2 lines of 3/4".

**1" text will allow a maximum of 15 characters per line.\***

**3/4" text will have a maximum of 21 characters per line.\***

(\*Spaces and punctuations are to be counted as characters)

Sample A engraving (6"x 12")

	15															21						
	↓															↓						
Line 1	I	N		M	E	M	O	R	Y		O	F		P	F	C						1" or 3/4"
Line 2	J	O	H	N		J		M	U	R	P	H	Y									1" or 3/4"
Line 3	2	6	t	h		C	O	A	S	T		A	R	T	I	L	L	E	R	Y		1" or 3/4"
Line 4	W	W	I																			1" or 3/4"
Line 5	M	U	R	P	H	Y		F	A	M	I	L	Y									1" or 3/4"

Please print legibly on order form below (wording will be centered by engraver)

	15															21						
	↓															↓						
Line 1																						1" or 3/4"
Line 2																						1" or 3/4"
Line 3																						1" or 3/4"
Line 4																						1" or 3/4"
Line 5																						1" or 3/4"

Donor Name: \_\_\_\_\_ Telephone#: \_\_\_\_\_

Address: \_\_\_\_\_

City: \_\_\_\_\_ State: \_\_\_\_\_ Zip: \_\_\_\_\_

Payment enclosed \$ \_\_\_\_\_

Payment made online \$ \_\_\_\_\_

**Please see reverse side.**

Make checks payable to: Wakefield World War II Memorial Fund Town of Wakefield  
c/o Town Administrator  
William J. Lee Town Hall, 1 Lafayette Street, Wakefield, MA 01880  
[www.wakefield.ma.us/veteransmemorial](http://www.wakefield.ma.us/veteransmemorial)

#### Administrative Use Only

Deposit: \_\_\_\_\_

Paid in Full \_\_\_\_\_

Paver # \_\_\_\_\_

## Veterans Walk of Remembrance Paver Donation



#### Notes:

The World War II Memorial Committee has the right to reject any engravings deemed inappropriate.

Additional order forms may be downloaded at [www.wakefield.ma.us/veteransmemorial](http://www.wakefield.ma.us/veteransmemorial)

After payment is received in full for the paver, there will be an acknowledgement certificate sent to the donor for verification of engraving information.

You will be notified as to when you may come to the Town Hall to choose your paver location. This process follows the order of when payment was received.

Example of setting up paver purchases



(55' x 90')

2-11-2020  
Site Approved to Build on

### Back Side Limit Line

This size was picked

## Scope Of Work, Memorial Site Prep

1) The site looks to be in a protected area. Small creek behind, cemetery on one side

Not a problem

- LEC is a consultant in Wakefield that could handle that process.

2) looks to me the finish grade of pavers should be +/- Elevation 89.5 feet.

3) Area to be prepared for construction is +/- 12,500 square feet.

4) construction sequence

A) Wetland protection (silt fence)

B) Remove top soil

(+/- 500 cubic yards)

C) place and compact

(+/- 710 cubic yards gravel base)



# Yearly Winter and Spring Water Build up has to be fixed

*War Memorial Committee*





**Prep Completed,  
ground raised to eliminate pooling of water**

*War Memorial Committee*





**Prep Completed,  
ground raised to eliminate pooling of water**

*War Memorial Committee*

