



**Lynnfield**  
MASSACHUSETTS

*The Pearl of the North*

**Lynnfield War Memorial Committee  
Special Meeting  
Briefing to Town Selectmen  
September 21<sup>st</sup> 2020**



# War Memorial Committee History

From the Beginning, Until Current

1. War Memorial Web Site
2. The War Memorial Mission Statement:
3. Original Narrative About the Memorial Proposal: 2017
  1. Our agreement with the town, as we began committee meetings, our guidelines
4. Approved Site by the Town Selectmen (when we presented 4 designs, to the Selectmen, for final approval, at Town Hall Meeting, M-Street Conference Center)
  1. Since then, Voted three time by Committee to keep Site
5. Sketch brief to the Selectmen, Voted by Committee to build (Majority)
  1. Sign then, Approved Design, voted three times by the committee to keep as design
6. Sketch of land area to build, with in designated build area, in coordination with Conservation Office (Emily Cademartori) and Town Engineer (Charlie Richter). Once certified design is completed, will be presented to Conservation Committee, for final build location. Both feel with the area we designated, we should have no issues with approval by the Conservation Committee.
7. Approved Sketches of War Memorial Design
8. Architect: Ron Ranere Architect Designs, Reading, contracted

# Strategic Planning Committee

War Memorial Committee

## Where to find us; Lynnfield Home Page

### 1. Lynnfield Home Page

#### 2. Boards and Commissions

#### 3. War Memorial

a. Meeting Schedule (Example: Every Other Month, Third Thursday of the Month)

b. Meeting Agenda and Minutes

c. Slides Presentations

d. Working Projects

All Slides and Minutes are posted to this Website





### **The War Memorial Mission Statement:**

The Town of Lynnfield War Memorial Commission has a mission find a suitable piece of town real-estate for the future location of the town's War Memorial honoring service members and their families, submit for approval a design to the Town Selectmen, and to raise money through donations, fund raisers, grants, for the construction of the project, and a Memorial Maintenance Endowment Fund to maintain the memorial preservation.

The Town of Lynnfield War Memorial is a monument to honor the memory of Lynnfield's men and women who demonstrated a willingness to serve and fight to defend our way of life from all wars to the present, and the future. The War Memorial Committee is to ensure that the Town of Lynnfield Veterans Memorial in our town will be maintained in perpetuity, even in those times when public funds are scarce or not available for maintenance or repair; to assist with ceremonies at the Memorial.

# Narrative About the Memorial Proposal

War Memorial Committee

- ❑ It needs to be in the center of the town where all of the people of Lynnfield and its visitors can gather to visit. The Memorial will be located across the street from main common.
- ❑ This memorial needs to be a stand alone. It can not overpower the center of town but compliments it. It must blend with the natural character of the town. We want it in the center of the town, its natural center of gravity. A place where the town is proud to show its Patriotism and commitment to its service members Past, Present and Future. Our proposal has been engineered with landscaping and brickwork that is seen throughout the town. It will have the proper landscaping to be in our great center.
- ❑ It will be a teaching memorial that tells the story of the town and the sacrifices the town's people have endured throughout history.
- ❑ It will be one memorial that will cover all the major wars that anyone from Lynnfield served in.
- ❑ It will tell a brief narrative of the of history of each combat operation, a map of where it took place, and the names of all the men and women who served from this town.
  - ❑ We will have more than enough help, that has already come forward, to gather the Information for the plaques and will ensure this memorial will be a town effort.
  - ❑ The plaques will be sets of three for each war (map of the area, narrative of the war, those who served in that conflict)



# Narrative About the Memorial Proposal

War Memorial Committee

- ☐ It will have complete accessibility and be handicap accessible.
- ☐ It will have the ability to not only capture what has happened to date, but to expand if needed with additional plaques.
- ☐ We will not move or alter any existing memorial
- ☐ They will be exchangeable if a mistake was made, or if in time, someone comes forward with a name that was missed.
- ☐ Plaques will be made of brushed aluminum for cost, ability to engrave easily and appearance.
- ☐ All services will have their service plaque represented. (three versions proposed)
- ☐ The stone walkway will be engraved stones that families can purchased to commemorate their loved ones that served, and to all those that contributed to the cause.
- ☐ It will be lit at night with landscaping style lights showing an eternal honor for those who have served.
- ☐ It will have an information board with details of the memorial as well as upcoming events.

## Committee Members:

Joseph Connell

Bruce Segal

Thomas Bogart

John Harrington

Paul Donato

Charles Leach

Nicholas Secatre

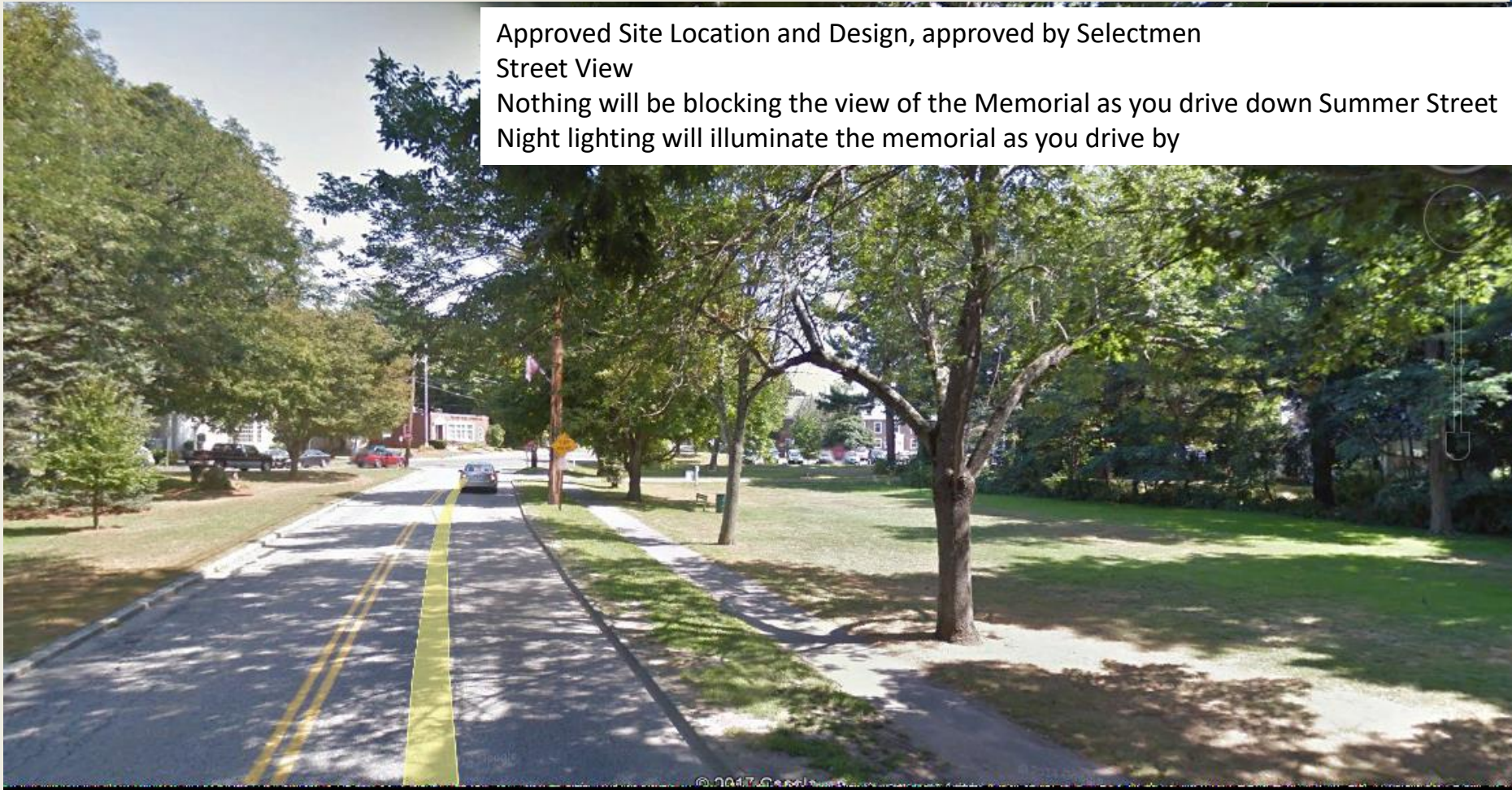
Ronald Nutter

# Approved Location

*War Memorial Committee*

Approved Site Location and Design, approved by Selectmen  
Street View

Nothing will be blocking the view of the Memorial as you drive down Summer Street  
Night lighting will illuminate the memorial as you drive by





# Approved Location, Aerial View

War Memorial Committee





# Approved Location, with Memorial Foot Print

War Memorial Committee

Town Hall  
Parking Lot

2 Spots  
Handicap  
Parking

Approved  
Site



## War Memorial Committee





# Approved Design, Rough Sketch, main Portion of Memorial

War Memorial Committee





Approved Design, Rough Sketch, as it sits on Engineered Survey Design

### Option 1 (60' x 120')

Option 1 (60' x 120')

FRONT LINE

89.1

89.5

89.2

89.3

89.1

89.2

89.3

89.4

89.5

89.6

89.7

89.8

89.9

90.0

90.1

90.2

90.3

90.4

90.5

90.6

90.7

90.8

90.9

91.0

91.1

91.2

91.3

91.4

91.5

91.6

91.7

91.8

91.9

92.0

92.1

92.2

92.3

92.4

92.5

92.6

92.7

92.8

92.9

93.0

93.1

93.2

93.3

93.4

93.5

93.6

93.7

93.8

93.9

94.0

94.1

94.2

94.3

94.4

94.5

94.6

94.7

94.8

94.9

95.0

95.1

95.2

95.3

95.4

95.5

95.6

95.7

95.8

95.9

96.0

96.1

96.2

96.3

96.4

96.5

96.6

96.7

96.8

96.9

97.0

97.1

97.2

97.3

97.4

97.5

97.6

97.7

97.8

97.9

98.0

98.1

98.2

98.3

98.4

98.5

98.6

98.7

98.8

98.9

99.0

99.1

99.2

99.3

99.4

99.5

99.6

99.7

99.8

99.9

100.0

100.1

100.2

100.3

100.4

100.5

100.6

100.7

100.8

100.9

101.0

101.1

101.2

101.3

101.4

101.5

101.6

101.7

101.8

101.9

102.0

102.1

102.2

102.3

102.4

102.5

102.6

102.7

102.8

102.9

103.0

103.1

103.2

103.3

103.4

103.5

103.6

103.7

103.8

103.9

104.0

104.1

104.2

104.3

104.4

104.5

104.6

104.7

104.8

104.9

105.0

105.1

105.2

105.3

105.4

105.5

105.6

105.7

105.8

105.9

106.0

106.1

106.2

106.3

106.4

106.5

106.6

106.7

106.8

106.9

107.0

107.1

107.2

107.3

107.4

107.5

107.6

107.7

107.8

107.9

108.0

108.1

108.2

108.3

108.4

108.5

108.6

108.7

108.8

108.9

109.0

109.1

109.2

109.3

109.4

109.5

109.6

109.7

109.8

109.9

110.0

110.1

110.2

110.3

110.4

110.5

110.6

110.7

110.8

110.9

111.0

111.1

111.2

111.3

111.4

111.5

111.6

111.7

111.8

111.9

112.0

112.1

112.2

112.3

112.4

112.5

112.6

112.7

112.8

112.9

113.0

113.1

113.2

113.3

113.4

113.5

113.6

113.7

113.8

113.9

114.0

114.1

114.2

114.3

114.4

114.5

114.6

114.7

114.8

114.9

115.0

115.1

115.2

115.3

115.4

115.5

115.6

115.7

115.8

115.9

116.0

116.1

116.2

116.3

116.4

116.5

116.6

116.7

116.8

116.9

117.0

117.1

117.2

117.3

117.4

117.5

117.6

117.7

117.8

117.9

118.0

118.1

118.2

118.3

118.4

118.5

118.6

118.7

118.8

118.9

119.0

119.1

119.2

119.3

119.4

119.5

119.6

119.7

119.8

119.9

120.0

120.1

120.2

120.3

120.4

120.5

120.6

120.7

120.8

120.9

121.0

121.1

121.2

121.3

121.4

121.5

121.6

121.7

121.8

121.9

122.0

122.1

122.2

122.3

122.4

122.5

122.6

122.7

122.8

122.9

123.0

123.1

123.2

123.3

123.4

123.5

123.6

123.7

123.8

123.9

124.0

124.1

124.2

124.3

124.4

124.5

124.6

124.7

124.8

124.9

125.0

125.1

125.2

125.3

125.4

125.5

125.6

125.7

125.8

12

OPTION F  
ETERNAL  
FLAME

WALL

WF #A10

WF #A16 X 87.5

#A9

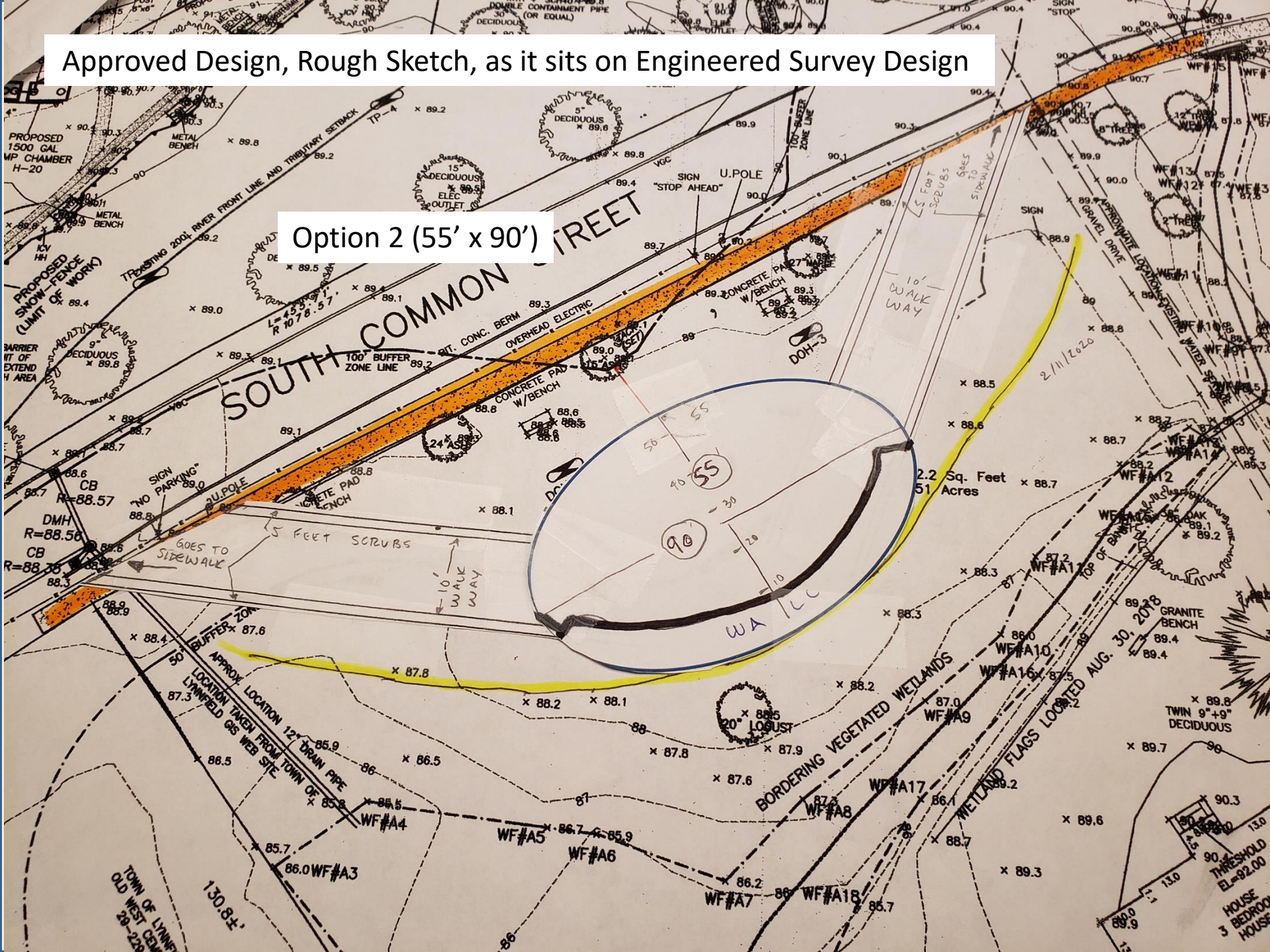
WETLAND FLAGS LOCATED

x 89



# Approved Design, Rough Sketch, as it sits on Engineered Survey Design

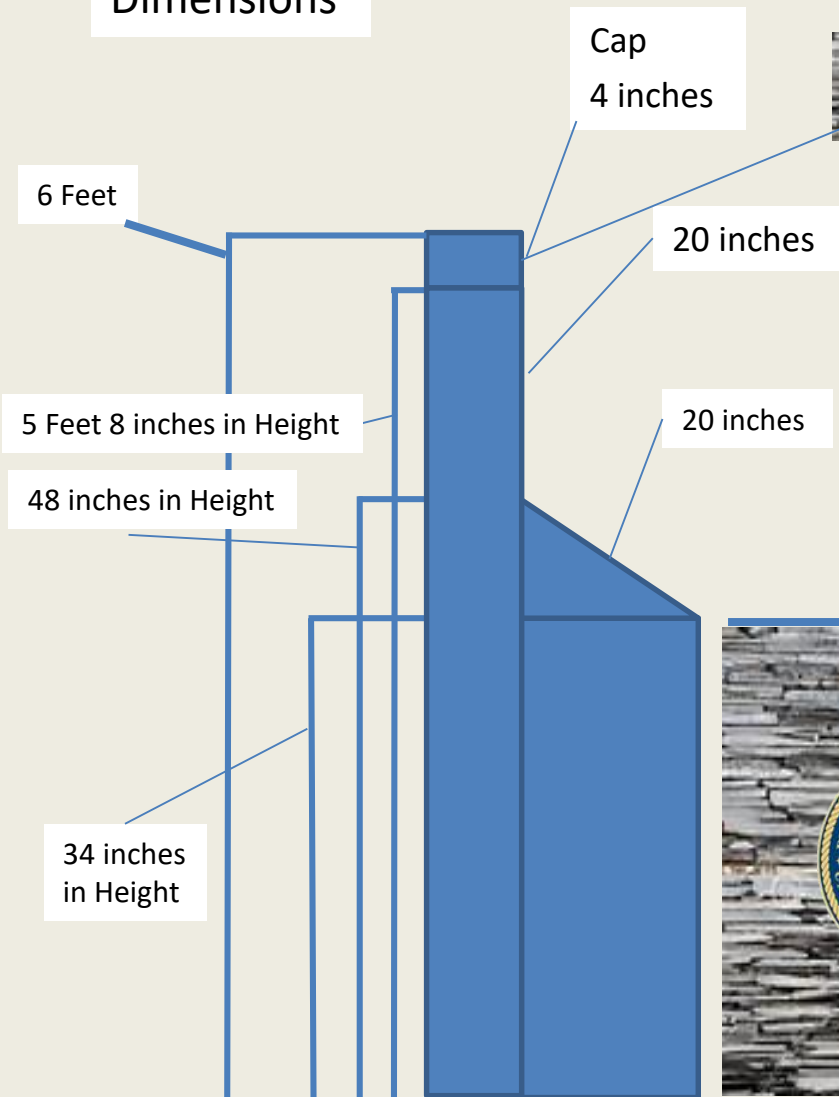
Option 2 (55' x 90')





## Wall Design Dimensions

### Side View of Memorial



### Curved Wall

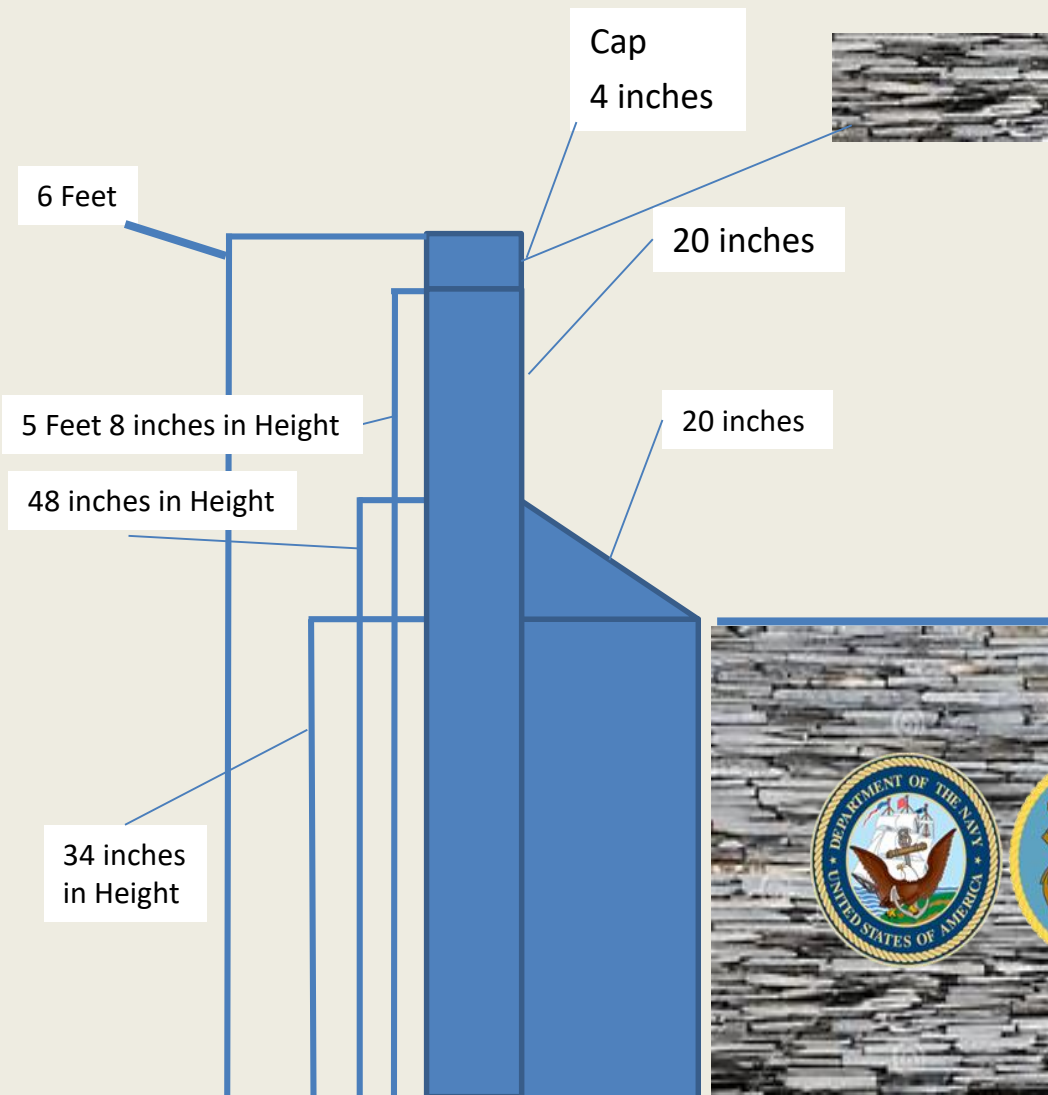
25 degree curve  
(might be less due to number of names)





## Wall Design

## Side View of Memorial



## Curved Wall



25 degree curve  
(might be less due to number of names)



# Wall Metal Plates Design

Engraved Plaques (set of three per conflict)

- Educational History, Facts
- Map of Battle Area
- Names of Veterans



Service Plaques  
Version 1



Service Plaques



Plaques: A series of three educational plaques for each conflict for the people of Lynnfield  
On the Plaques : Brief History, Map of Conflict, Names of Lynnfield Veterans

<p>The Revolutionary War Began on April 19<sup>th</sup> 1775 at what is know as the North Bridge, Located 14 miles from here, in the Town of Concord.</p> <p>.....</p> <p>.....</p> <p>.....</p> <p>.....</p> <p>.....</p> <p>.....</p> <p>.....</p> <p>The War ended on (date), with the following casualties for the war</p> <p>Wounded in Action</p> <p>Kiled in Action</p> <p>Missing in Action</p>	<p>Map of where the Revolutionary War took place</p>
---	--

Here are the names of those from Lynnfield who  
severed and fought during Revolutionary War

Name, US Army

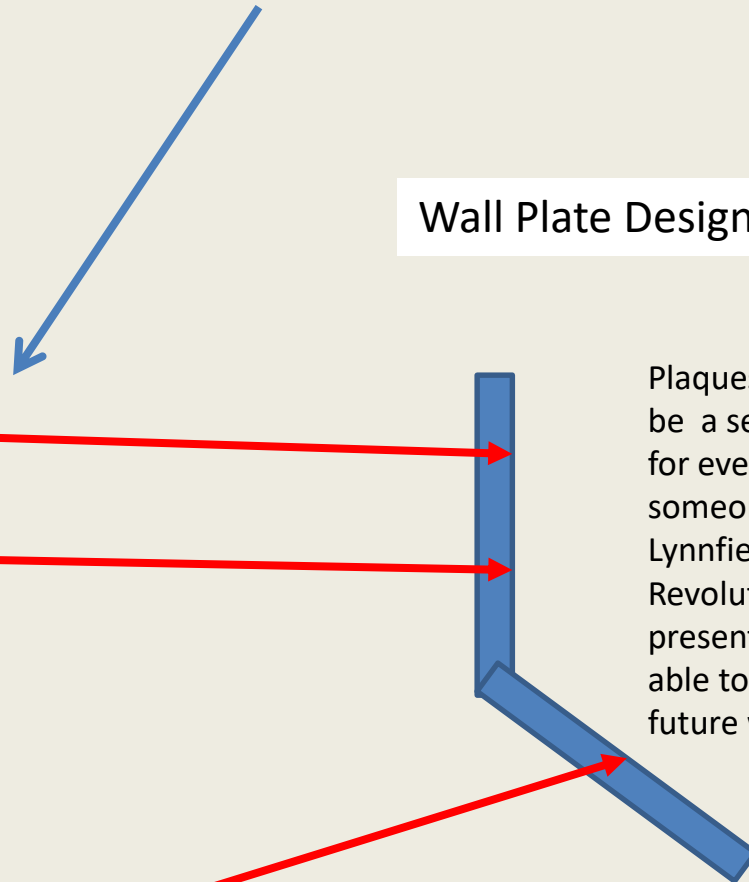
Name, Navy

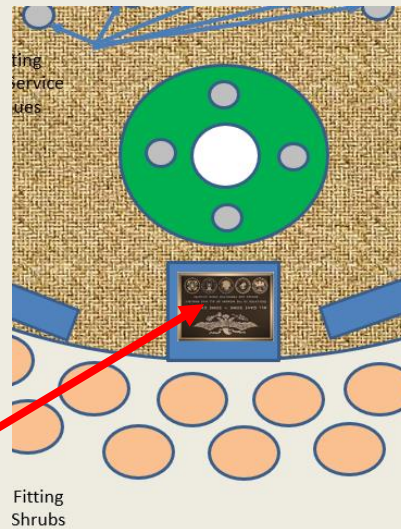
Name, Air Force

Name, Marines

### Wall Plate Design

Plaques: There will  
be a set of Plaques  
for every War that  
someone from  
Lynnfield served in.  
Revolutionary War to  
present (and will be  
able to capture  
future wars.



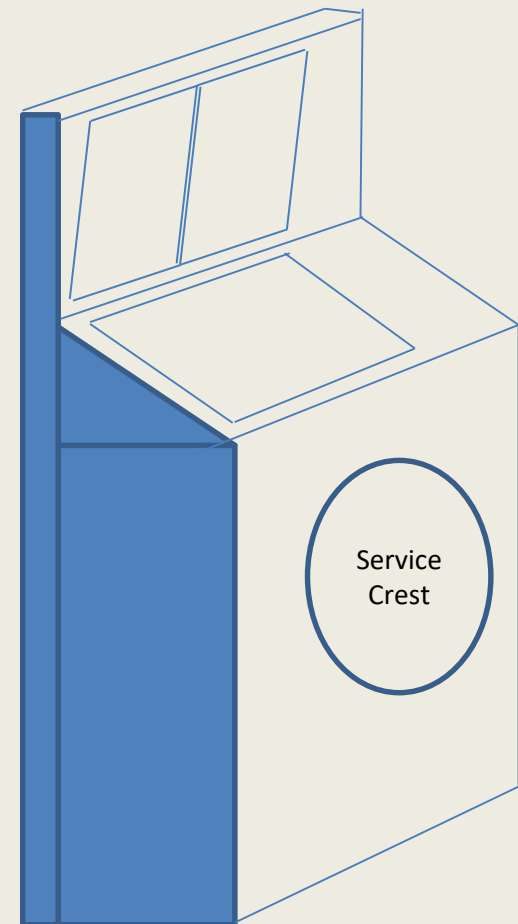
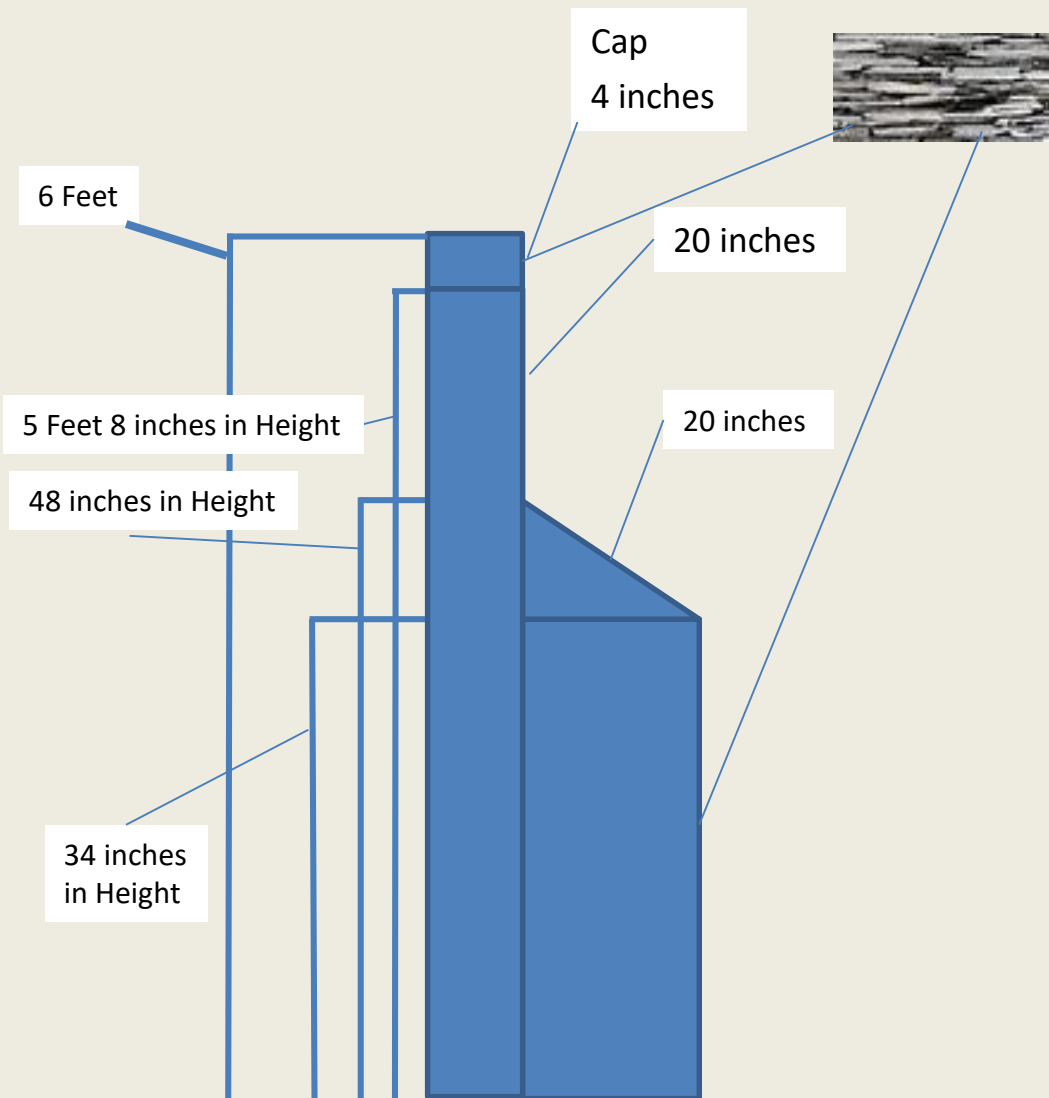


Lower Plaque Design  
1 Foot, 6 inches off Ground





# Dimensions



# Wall Mock Up

War Memorial Committee

